

Toner Container Replacement

When toner is empty, the following message will be displayed, replace the toner.

"Toner [C][M][Y][K] are empty."

When toner runs low, the following message will be displayed. Make sure you have a new toner container available for replacement.

"Toner is low. [C][M][Y][K] (Replace when empty.)"

Frequency of Toner Container Replacement

The life of the toner containers depends on the amount of toner required to accomplish your printing jobs. According to ISO/IEC 19798 and EcoPrint switched off the toner container can print as follows (A4/Letter paper is assumed):

Toner Color	Life of the Toner Container (Printable pages)
Black	4,000 images
Cyan	3,000 images
Magenta	3,000 images
Yellow	3,000 images

NOTE

- The average number of images that can be printed with each of the toner containers provided with the machine is 1,200 images.
- For the toner container, always use a genuine toner container. Using a toner container that is not genuine may cause image defects and product failure.

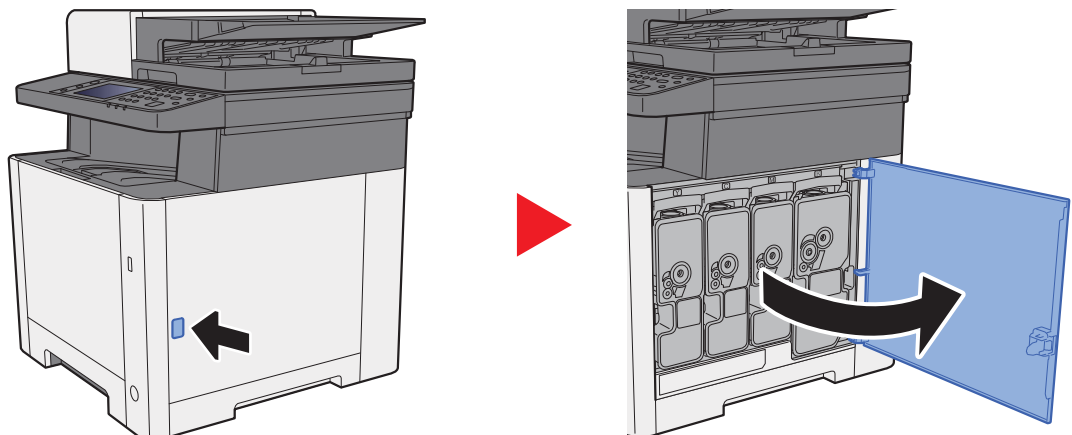
CAUTION

Do not attempt to incinerate parts which contain toner. Dangerous sparks may cause burns.

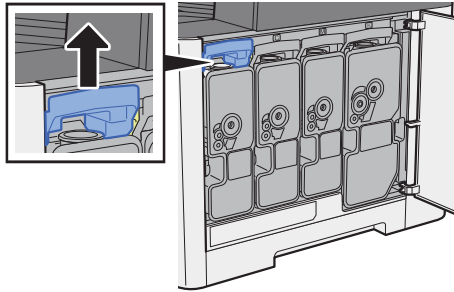
Replacing the Toner Container

Installation procedures of the toner container is same for every color. Here, we'll explain the yellow toner container, as an example.

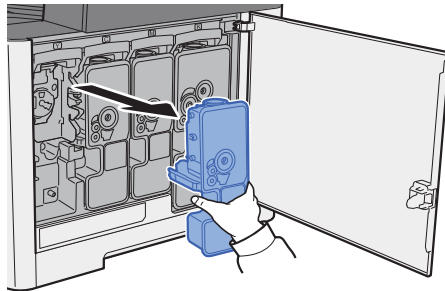
1 Open the right cover.



2 Unlock the toner container.



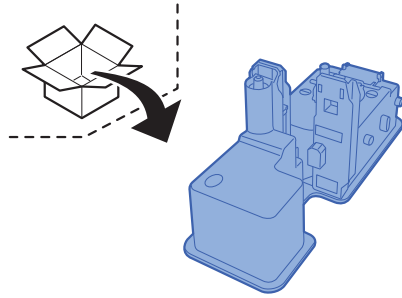
3 Remove the toner container.



4 Put used toner containers into the plastic waste bag.

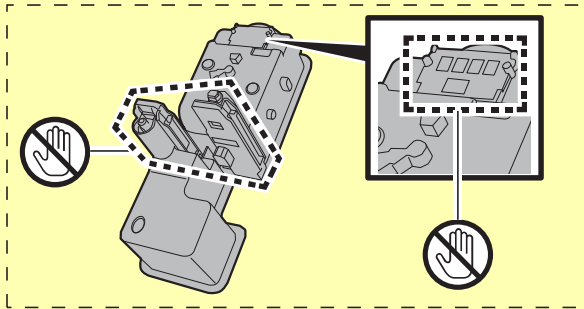


5 Remove the new toner container from the box.

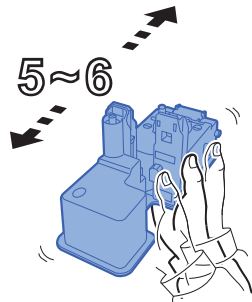


✓ IMPORTANT

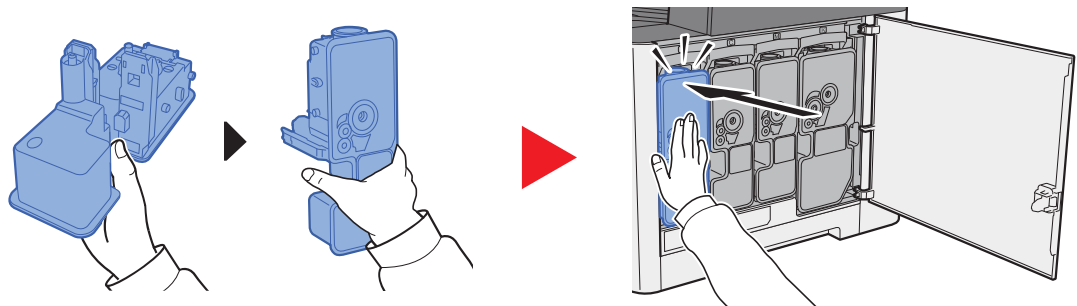
Do not touch the points shown below.



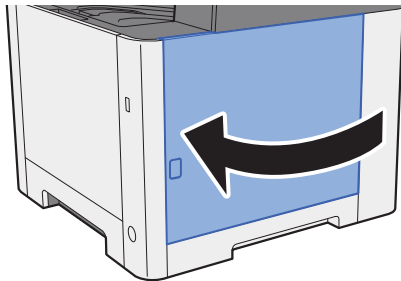
6 Shake the toner container.



7 Install the toner container.



8 Close the right cover.



NOTE

- If the right cover does not close, check that the new toner container is installed correctly.
- Return the exhausted toner container to your dealer or service representative. The collected toner container will be recycled or disposed in accordance with the relevant regulations.

Loading Paper

When Cassette # runs out of paper, the following messages will be displayed.

"Add the following paper in cassette #." (# is a cassette number)

"Add the following paper in the multi purpose tray."

➔ [Loading Paper \(page 3-2\)](#)

[Loading Paper in the Multi Purpose Tray \(page 5-5\)](#)